



Company Profile 2020



GLOBAL LIGHTNING TECHNOLOGIES (M) SDN BHD

(352683-V)

36, Jalan TS 6/9, Taman Industri Subang,
47600 Subang Jaya, Selangor Darul Ehsan, Selangor.
Tel: 03-563SURGE @ 56378743, 5636 9230, 5636 9224
Fax: 03-5637 0816
Email: info@gltm.com.my
URL: www.gltm.com.my



CADWELD®
WELDED ELECTRICAL CONNECTIONS

CRITEC™
SURGE PROTECTION DEVICES

ERITECH®
LIGHTNING PROTECTION/GROUNDING

ERICO®

Global Lightning Technologies (M) Sdn Bhd or GLTM has its origin that dates back to 1986, when Lightning Protection Division of DOM Industries (M) Sdn Bhd was first set up.

As a result of strong growth and an increasing demand in this sector, it was decided that this division of DOM Industries became a separate entity to focus primarily on Lightning Protection Systems.

On 25-July-1995, Global Lightning Technologies (M) Sdn Bhd was incorporated.

GLTM today, with over 60 man years of experience, is recognized as one of the most highly regarded service provider in the field of Lightning Protection, Surge Protection, Earthing & Bonding systems.



BOARD

GENERAL MANAGER

TECHNICAL SALES
MANAGER

TECHNICAL SALES
MANAGER

ADMIN MANAGER

ACC & INVENTORY

INVENTORY CLERK

ADMIN CLERK
& ASSISTANT

SALES & PROJECT
ENGINEER

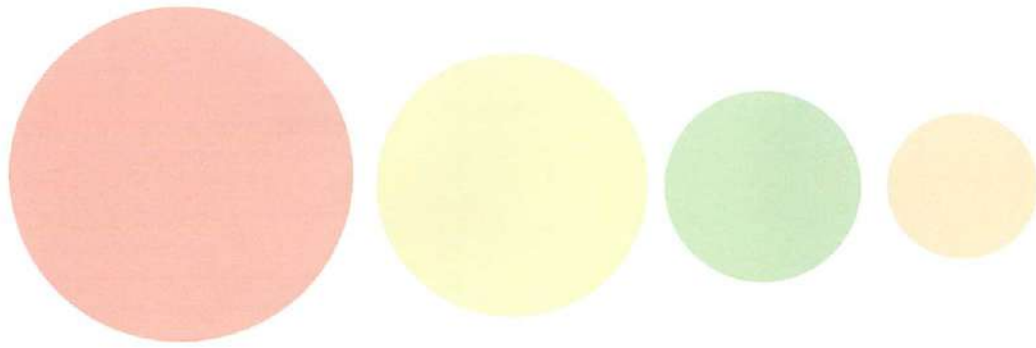
SALES & PROJECT
ENGINEER

SITE
SUPERVISOR

SITE
SUPERVISOR

SITE
SUPERVISOR

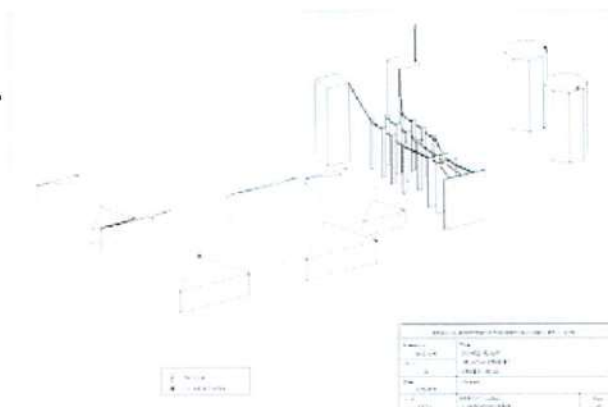
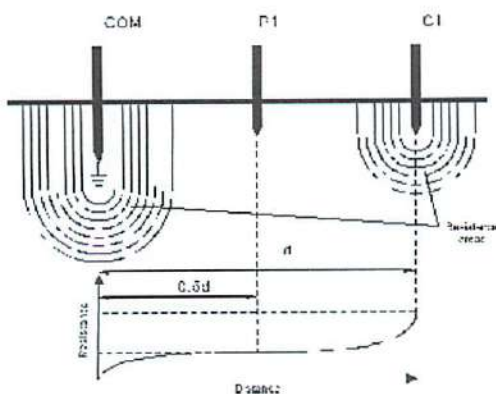
Organization



GLTM is primarily focused on providing lightning protection products and services to the local industries.

We are capable of providing an engineering based solutions which include

- Design
- Supply
- Engineering
- Installation
- Supervision
- Testing & Commissioning
- Maintenance
- Troubleshooting
- Site Survey & Audit



Our Services



Founded in 1903, ERICO today is a premier manufacturer of engineered products designed for diverse niche applications in the electrical, mechanical, commercial and industrial, rail and utility markets.

With its headquarters in Solon, Ohio, USA, ERICO has a work force of over 1600 employees serving more than 25 countries with manufacturing & distribution facilities worldwide.

ERICO is actively involved in numerous R&D programs for lightning, surge and transient products:

- programs in Darwin, Indonesia & USA
- invited to participate in NASA Rocket Triggered lightning experiments
- Member of many international lightning protection research associations
- Member of Committees for Australian, NZ, US, IEC standards for Lightning, Surge & Transient Protection



ERICO-GLTM

GLTM Product Lineup

ERITECH

System 3000 Direct Strike Lightning Protection System

System 2000 Direct Strike Lightning Protection System (Conventional System)

System 1000 Direct Strike Lightning Protection System (ESE)

Earthing/Grounding Materials

CRITEC

Surge Protection Devices (Power & Data)

CADWELD®

Exothermic Welding Connections

GEM

Ground Enhancing Materials

ERIFLEX

Low Voltage Power Distribution Components (Flexible Bar, Power Blocks & Terminals)

RAIL

Rail Industrial and Electrical Products



ERICO-GLTM

ERITECH® SYSTEM 3000

Lightning Protection Products

The ERITECH SYSTEM 3000 is a technically advanced lightning protection system. The unique features of this system allow the achievement of superior technical performance and hence provide more reliable lightning capture.

The ERITECH DYNASPHERE air terminal provides a preferred point for lightning discharges which would otherwise strike and damage an unprotected structure and/or its contents.

The ERITECH DYNASPHERE is connected to an ERITECH ERICORE downconductor and the ground system in such a way as to provide a totally integrated system.

The ERITECH DYNASPHERE has been used in over 15,000 installations worldwide, and on some of the tallest building structures in the world including the Menara TM (formerly known as Menara Telekom) along Jalan Pantai Baru, KL.

FACTS:

Total height of Menara TM is 310m which is the second tallest building in Malaysia.

ERITECH DYNASPHERE terminal installed has been struck over 350 times since its installation in December 2001.



Mainstream Product

CRITEC® Surge Protection Products

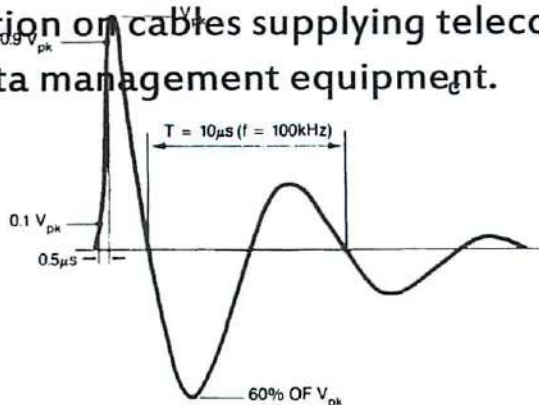
ERICO recognizes that no single technology can protect a facility from the damaging effects of lightning and induced transients, which can severely damage or destroy electronic systems.

An integrated approach is required to provide effective direct strike protection and grounding, in combination with effective surge protection, so that valuable assets, data and personnel remain secure and safe.

By following the Six Point Plan of Protection, ERICO customers are able to implement effective solutions to individual lightning, grounding and surge problems while retaining an integrated protection philosophy.

Point 5 of the Six Point Plan advocates a coordinated approach to surge protection, where the first stage of defense is the installation of primary protection devices at the mains supply service entrance, followed by secondary protection at distribution branch panels and where necessary, at point-of-use applications.

Point 6 recognizes the need to provide effective surge protection on cables supplying telecommunications, signal and data management equipment.



Mainstream Product

CADWELD® Welded Electrical Connections

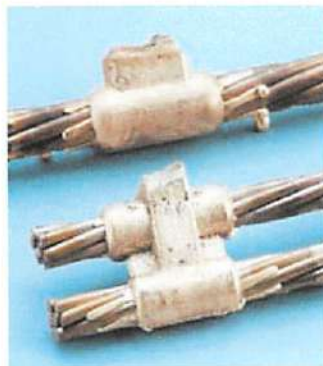
BS6651:1999 states "Any joint other than one of welded type represents a discontinuity in the current conducting system and is susceptible to variation and failure".

The original exothermic welding process was developed by ERICO in 1938 by Dr. Charles Cadwell.

CADWELD process was named in honour of Dr. Cadwell.

CADWELD joint exceeds requirement by IEEE Std 837 for qualifying permanent connections used in Substation grounding.

CADWELD materials are certified by US Underwriter's Laboratory or UL (UL 467) for grounding & bonding product safety.



FACTS:

Melting temperature of a CADWELD connection is 1083 deg C, which is similar to the melting temperature of copper conductors.

During a CADWELD process, reaction temperature inside mold chamber can be as high as 2500 deg C.

Conductor size can be reduced by up to 66% when CADWELD connection is used.

A CADWELD connection will not deteriorate with age.

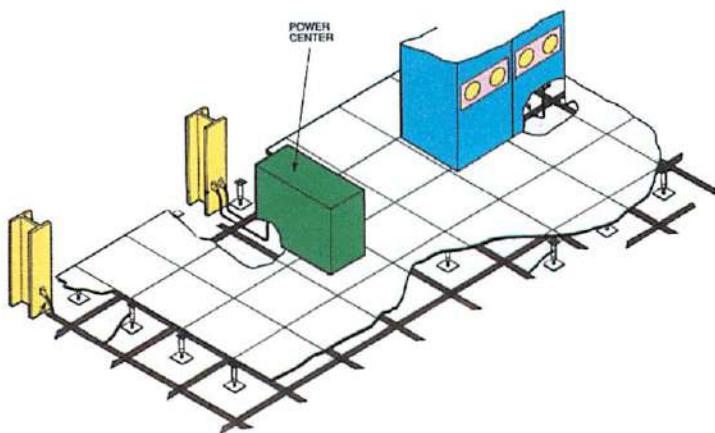
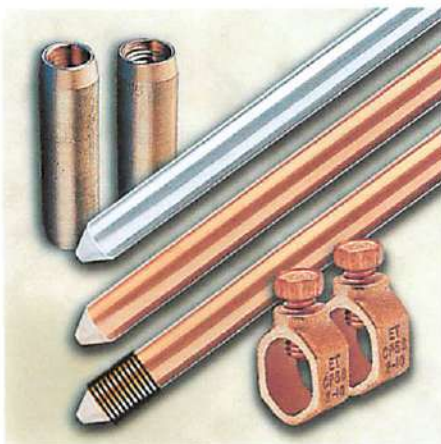
Mainstream Product

Grounding Products and Systems

During the 1970s, ERICO pioneered the development and standardization of the copperbonded steel grounding electrode.

Since that time, ERICO's dominance as the world's leading manufacturer of grounding products has seen its expansion into many related industries.

Today, ERICO remained as one of the largest manufacturer in molecularly bonded ground rods in its fully automated factory in Solon, Ohio, USA.



FACTS:

ERICO Ground Enhancing Material is more than 20 times lower in resistivity factor compared to Bentonite Clay.

ERICO Signal Reference Grid (SRG) is in accordance to IEEE Std 1100 for high frequency, low impedance grounding of Electronic Equipment.

Mainstream Product

ERIFLEX® Low Voltage Components

ERICO ERIFLEX range of low voltage electrical components products offers great versatility and functionality solutions with its space saving components.

ERIFLEX components for electrical panels have proven reliability and time-saving benefits, and backed by superior technical support.

Computerized software allows users to review all products in the ERIFLEX System range which includes copper Busbars, FLEXIBAR, bar supports, insulators and many more.

Our technical support personnel is able to help in the design & selection of ERIFLEX components using dedicated computerized software.

FACTS:

Up to 25% less space is required when ERIFLEX FLEXIBAR is used compared to conventional copper conductor.

ERIFLEX FLEXIBAR offers unlimited bending and twisting possibilities.

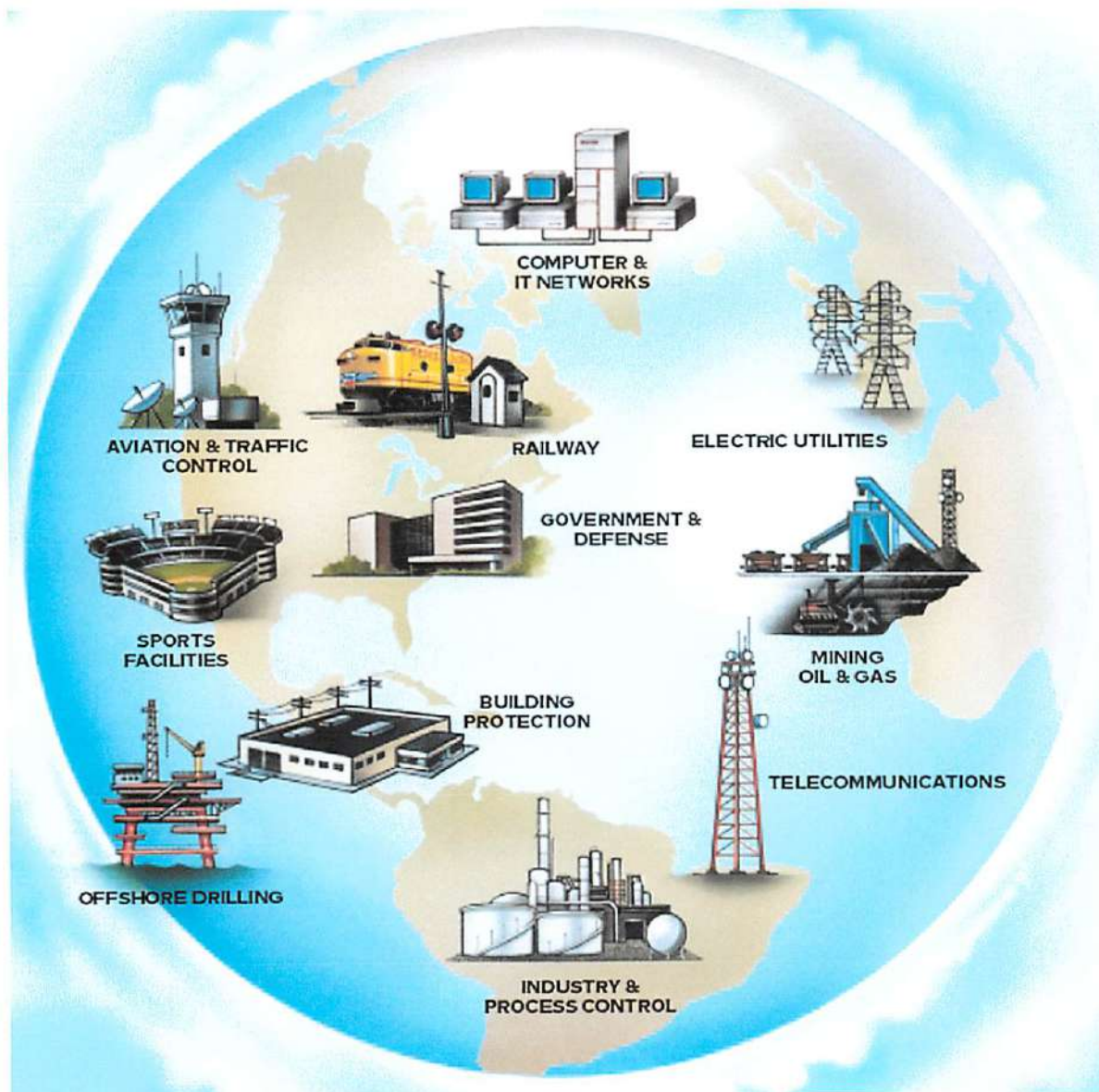
All FLEXIBAR manufactured with 99.9% high quality copper purity.

High insulation quality allows closer spacing than traditional busbar design.

ERIFLEX offers a wide range of connection products for all low voltage industrial power & control applications.

Mainstream Product

Since its incorporation, GLTM has been actively involved, offering engineering solutions to various industries in Malaysia in the field of Lightning Protection, Surge Protection, Grounding & Bonding.



Market Sector



and many more...

Our Customers

RAILWAY Industries

Union Switch & Signal

IRCON-Tg Pelepas | KTMB (Rawang-Ipoh Double Track
PUTRA LRT | STAR LRT



OIL & GAS Industries

Cognis Oleochemicals | Petronas Gas (Block Valve Stations)
GDC Putrajaya | CUF Petrochemical | Petronas Gas (Gas Utility Plant)
GAS Malaysia (SCADA for Gas Dist Pipeline) | PETLIN (Polyethylene Refinery)
Tasmanian Alkaloids Chemical Plant | SHELL Sarawak
SHELL Refinery Port Dickson | Japan Gas Corporation | SHELL Bintulu



TELCO/BROADCAST Industries

CELCOM | CELCOM Broadband | PETRONAS Dagangan
MACRES Remote Sensing Satellite Station | ANGKASA Satellite Monitoring
MEASAT/BSS-M3, Cyberjaya | Al-Jazeera International
ASTRO AABC | ASTRO AWANI



POWER Industries

Northern Utility Resources (NUR) | SIEMENS Coal Fired Power Station
TNB MRCC Bangsar | BELL Eco Green



Others

The STAR Publication | URACO Factory | Labuan RMAF Hangar
West Port | Kuala Lumpur International Airport (KLIA)
Jabatan Laut Semenanjung Malaysia | LAFARGE Cement, Langkawi
Kemaman Supply Base (KSB) | DUMEX Factory



Goal

Our Customers are the reason for our existence. GLTM is committed in continuing our support for all customers with technical support, design, consultation, presentation, technical seminars and engineering solutions.

GLTM have a management led philosophy of Total Quality Management through continual improvement, from engineering, manufacturing & design to after sales services documentation and customer support.

Together with ERICO, we continue our commitment to our customers by providing new ideas, products and services that will insure their success.

Vision

It is with assurance that we can report an ability within our field of endeavour, which is equal or greater to any other organization.

Whether the problem be direct strike or induced effects of lightning, whether lightning or switching surges arrive via power or data lines, whenever there is a need for a good low impedance grounding system, our vision is that we either have the products, or can engineer the solution.

LOCATE US!

