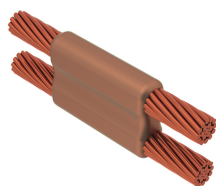


Heavy Duty Molds



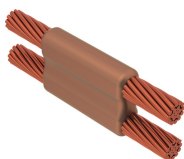
Heavy duty connections were originally developed to be used on reclaimed cable. The heavy duty connections use a larger size connection cavity in the mold and a larger size welding material than the equivalent standard duty connection.

The larger size welding material supplies extra BTU's to melt the heavy oxide coating on the conductor and to overcome some severe field conditions. Heavy duty connections eliminate cutting the run conductor on certain types of connections, reduce cable cleaning requirements for old or reclaimed cable, and increase reliability under adverse field conditions.

Heavy duty connections are increasingly being specified for copper-coated steel conductor connections.

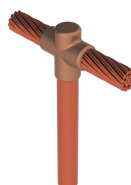
Cable to Cable, Heavy Duty

Cadweld heavy-duty graphite mold designed for heavily oxidized conductors to create cable to cable exothermically welded connections.



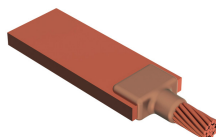
Cable to Ground Rod or Other Rounds, Heavy Duty

-



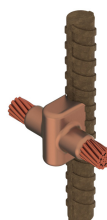
Cable to Lug or Busbar, Heavy Duty

-



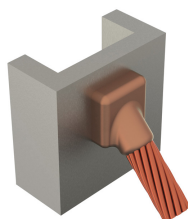
Cable to Rebar, Heavy Duty

-



Cable to Steel, Heavy Duty

-



Ground Rod Splice, Heavy Duty

Cadweld heavy-duty graphite mold designed for ground rod splice exothermically welded connections.



WARNING

nVent products shall be installed and used only as indicated in nVent's product instruction sheets and training materials. Instruction sheets are available at www.erico.com and from your nVent customer service representative. Improper installation, misuse, misapplication or other failure to completely follow nVent's instructions and warnings may cause product malfunction, property damage, serious bodily injury and death and/or void your warranty.

© 2021 nVent All rights reserved

nVent, nVent CADDY, nVent ERICO, nVent ERIFLEX and nVent LENTON are owned by nVent or its global affiliates.

All other trademarks are the property of their respective owners. nVent reserves the right to change specifications without prior notice.