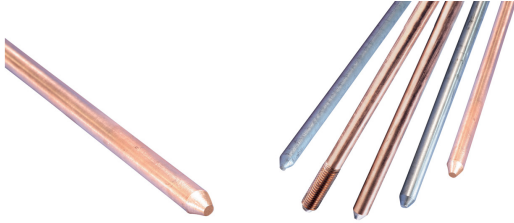
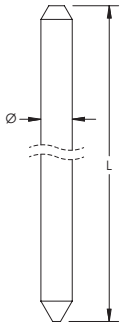


# Solid Copper Ground Rod, Pointed



- Solid copper ground rods made of high conductive hard drawn bare copper



Material: Copper  
Tensile Strength: 290 MPa Min



Part Number	Ground Rod Diameter, Nominal	Ground Rod Diameter, Actual $\emptyset$	Length L	Unit Weight	Certifications
LPC700	1/2"	12.7 mm	2.44 m	2.76 kg	UL
LPC702	1/2"	12.7 mm	3.05 m	3.44 kg	cULus
LPC704	5/8"	15.9 mm	2.44 m	4.29 kg	UL
LPC706	5/8"	15.9 mm	3.05 m	5.35 kg	cULus
LPC711	3/4"	19.1 mm	3.05 m	7.70 kg	cULus

Due to the inherent softness of the copper material, special consideration should be given when driving this product into the soil.

UL, UR, cUL, cUR, cULus and cURus are registered certification marks of UL LLC.

#### WARNING

nVent products shall be installed and used only as indicated in nVent's product instruction sheets and training materials. Instruction sheets are available at [www.erico.com](http://www.erico.com) and from your nVent customer service representative. Improper installation, misuse, misapplication or other failure to completely follow nVent's instructions and warnings may cause product malfunction, property damage, serious bodily injury and death and/or void your warranty.

© 2021 nVent All rights reserved

nVent, nVent CADDY, nVent ERICO, nVent ERIFLEX and nVent LENTON are owned by nVent or its global affiliates.

All other trademarks are the property of their respective owners. nVent reserves the right to change specifications without prior notice.