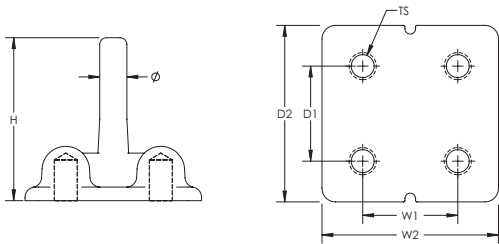


B161/B164 Earthpoint, Four Stud



- Long-lasting design
- Low ground resistance and impedance
- Superior electrical conductivity and resistance to corrosion
- Electrically and mechanically robust and reliable
- Easy to install as a Prefabricated Earthbridge once nVent ERICO Cadweld welded to a piece of conductor



Part Number	Article Number	Width 1 W1	Width 2 W2	Depth 1 D1	Depth 2 D2	Height H	Diameter Ø	Thread Size TS
Material: Brass								
B1612Q	-	31.8 mm	63.5 mm	25.4 mm	57.2 mm	76.2 mm	13.5 mm	3/8 UNC
B1613Q	-	31.8 mm	63.5 mm	25.4 mm	57.2 mm	76.2 mm	21.0 mm	3/8 UNC
B1642Q	-	44.5 mm	82.6 mm	44.5 mm	82.6 mm	76.2 mm	13.5 mm	1/2 UNC
B1643Q	-	44.5 mm	82.6 mm	44.5 mm	82.6 mm	76.2 mm	21.0 mm	1/2 UNC
Material: Copper								
B16110B	166030	30.0 mm	65.0 mm	30.0 mm	65.0 mm	42.0 mm	14.0 mm	M10
B16412A	166060	44.5 mm	85.0 mm	44.5 mm	85.0 mm	70.0 mm	10.7 mm	M12

Assemblies require conductors and nVent ERICO Cadweld connections, which must be ordered separately.

WARNING

nVent products shall be installed and used only as indicated in nVent's product instruction sheets and training materials. Instruction sheets are available at www.erico.com and from your nVent customer service representative. Improper installation, misuse, misapplication or other failure to completely follow nVent's instructions and warnings may cause product malfunction, property damage, serious bodily injury and death and/or void your warranty.

© 2021 nVent All rights reserved

nVent, nVent CADDY, nVent ERICO, nVent ERIFLEX and nVent LENTON are owned by nVent or its global affiliates.

All other trademarks are the property of their respective owners. nVent reserves the right to change specifications without prior notice.