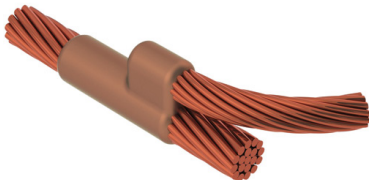


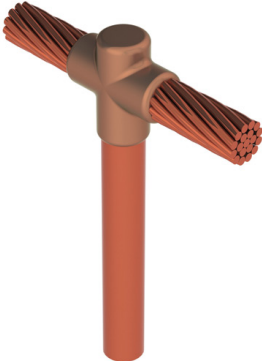
nVent ERICO Cadweld Exolon Reduced-Emission Molds



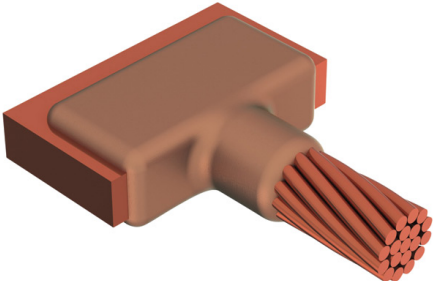
Developed in 1988, nVent ERICO Cadweld Exolon connections represented a significant advancement in welded electrical connections for sensitive indoor applications like data centers, hospitals, and other clean room environments. The virtual elimination of smoke and a unique electronic starting system makes this an ideal solution for sensitive applications. Each nVent ERICO Cadweld Exolon package contains ceramic filters that produce an extremely low emission connection.



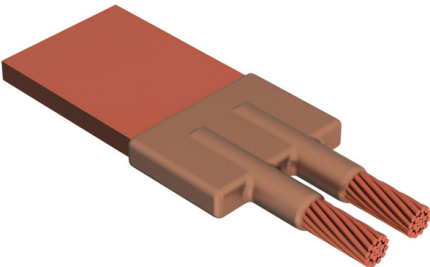
nVent ERICO Cadweld Exolon, Cable to Cable



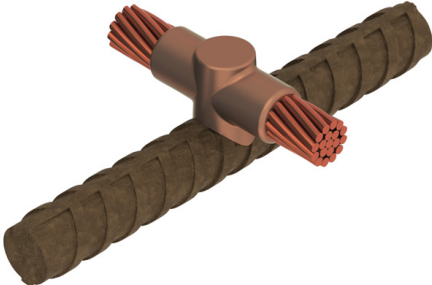
nVent ERICO Cadweld Exolon, Cable to Ground Rod or Other Rounds



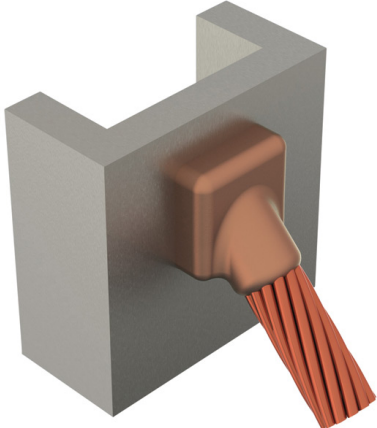
nVent ERICO Cadweld Exolon, Cable to Lug or Busbar



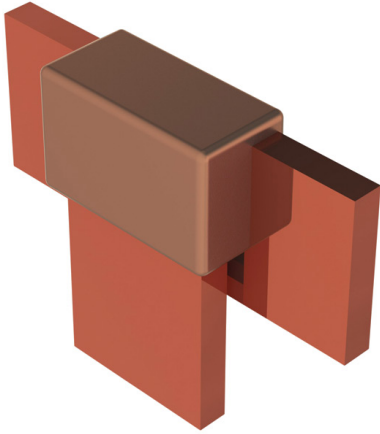
nVent ERICO Cadweld Exolon, Cable to Cable to Lug or Busbar



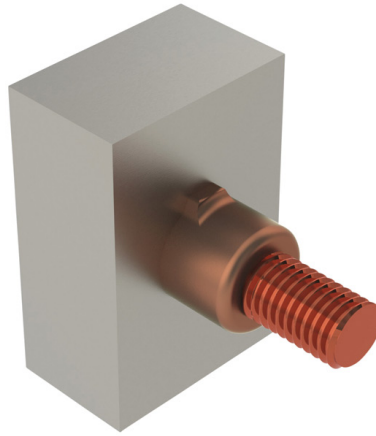
nVent ERICO Cadweld Exolon, Cable to Rebar



nVent ERICO Cadweld Exolon, Cable to Steel



nVent ERICO Cadweld
Exolon, Busbar to Busbar



nVent ERICO Cadweld Exolon,
Steel Stud to Steel Surface

WARNING

nVent products shall be installed and used only as indicated in nVent's product instruction sheets and training materials. Instruction sheets are available at www.erico.com and from your nVent customer service representative. Improper installation, misuse, misapplication or other failure to completely follow nVent's instructions and warnings may cause product malfunction, property damage, serious bodily injury and death and/or void your warranty.

© 2021 nVent All rights reserved

nVent, nVent CADDY, nVent ERICO, nVent ERIFLEX and nVent LENTON are owned by nVent or its global affiliates.

All other trademarks are the property of their respective owners. nVent reserves the right to change specifications without prior notice.